

(AGN-152)



[Read More](#)

SKU:

Price:

Stock: instock

Categories: [Uncategorized](#)

Product Description

Specification :- Storage capacity : 06 Body storage Dimension, Outer : 2946 x2363x 2215 (WxDxH) Type of insulation : PUF panels Thickness of insulation : 80mm Temp. Range : +2 TO +6 Deg C Controller : Microprocessor based controller Temperature Display : Digital LED Material : Stainless Steel 304 Door : Outer front doors will be double walled Insulated : Puf Insulation : Polyurethane foam insulation with a thickness of 80mm. Body Trays : Body tray made of Stainless steel 304 GRADE Interior lighting : Vapours proof Incandescent lighting Refrigeration system : RTU-10 WITH forced air circulation to maintain temperature Compressor : Reciprocating type, Heavy duty Air-cooled compressor. Noise level : (<60dB) Condenser : Highly efficient condenser with automatic condensate evaporating system Evaporator : Internal evaporator system Forced draught Air Circulation : Forced air circulation to maintain chamber uniformity Power Supply : 220 volts, 50Hz / 110 volts, 60Hz. Refrigerant : R404A **SPARES**

ACCESSORIES :- * Instruction Manual * Warranty Card

[READ MORE](#)

SKU:

Price:

Stock: instock

Categories: [Uncategorized](#)



Product Description

Definition :- Specifically designed for growth of the Algae in flasks. It provides adequate space with controlled temperature, humidity and light conditions. **Specification :-** Volume : 600 Liters Illumination : Four Tier LED Light Type : Horizontal shape Inner Working area : 2m² . Access Port : 1.25" One CO₂ range : 1 to 10 % Interface : Graphical interface Controller : Programmable controller Sensor inputs : Three wires RTD sensor inputs Plant growth height : 30 cm on each tier Temperature : 15° to 45°C (±0.5°C) Safety : Alarm, the controller shut down the chamber and restart when the temp returns to normal system restart automatically when the internal temp is normal. Touch screen controller : High definition IPS (1280 x 800) Monitoring : Microprocessor Based Touch Screen for real time monitoring. Display : Trend graphs Display directly on screen for both Set-point and Actual conditions Programs : Display current set-points and process values, alarm status, alarm settings, program operation mode,

Air circulation inside chamber adjustable air diffuser - LIT-OTT ninge design allows for simple removal of door - Top Mounted Air-cooled condensing unit with hot gas bypass system - Ceiling mounted evaporator coil incorporates twin air circulation fans - Solenoid valves have extended stem for quiet and long-life operation. - The system restart automatically when the internal temp is normal. - One door providing full access to chamber interior, magnetic gasket, with observation window in front of door with light cover - The LED light cool white in color. - Tier Light Measured @6" From Lamp Bank. - Run 24 hour multi-steps program in ramping mode, non-ramping mode, run non-24 hours program in elapsed time - Sequence multi-step programs , Dual experiment protection, two calibration offsets per input channel, Light lifetime maintenance activated - The accumulated hours can be reset for each output - Three wires RTD sensor inputs, visible alarm displays with audible buzzer - Power failure event logging - Ambient temperature monitoring - Digital lighting control, troubleshooting with up front Diagnostics Menu - Uniform Light Intensity programmable from 15 to 100% dimmable 300μmoles - Shelve and light canopy adjustable in ½" increments also removable without any tool. - Temperature safety alarm, the controller shut down the chamber and restart when the temp returns to normal. **Accessories :-** - Power socket 15 Amp -2Nos - CO2 Cylinder - Co2 Regulator - Voltage stabilizer - Cord & plug - Warranty Card - Instruction Manual

Analog to D Convertor K



AGN-080A Salient F class insulated Prin printed circuits and out through 2mm C. The trainer is house trainer set 14" x 10. 8 bit ADC-0809 mor 8 channels Multiple provide front on the analog signal. Input Voltmeter : Analog/ converter on one se

Stock: instock

Categories: [Uncategorized](#)

Product Description

Bomb Calorimeter (AGN-800)

[Read More](#)

SKU:

Price:

Stock: instock

Categories: [Uncategorized](#)



Product Description

Features :- Display Calorific Value in Calorie/gram or other internationally accepted units. Extensive Diagnostic Function for problem investigation Integrated and closed loop water handling system "auto shut off" of the filling valve after attaining of requisite pressure in the bomb. Automatic compensation of calorific value to get ready made GCV in Cal/gm. or Kcal/Kg. Double stage SS gas regulators with safety valve Branded on line UPS with 60 minutes power back up Laser Printer with all accessories & software and compatible with PC Test Certificate of Gas, Hydro Test Certificate of Cylinder & Filling Penmission Material Producer as per ISO 17034.

Technical Data :- Controller : Microprocessor based/PC operated Standard : ASTM: D 5865 & IS 1350 Part II Principle : Isoperibol Calorimetric principle. Power : 220V, 50Hz single phase AC

Analytical Balance :- capacity: 0-220 gram Least Count : 0.1 mg, repeatability: 0.1mg, Automatic internal calibration Display : clear digital display with backlight. **PC** PC : Branded PC for running of the instrument & Laser Printer Make: Pcs Central Processing Unit (CPU) : INTEL Core i-7 Memory: Random Access Memory (RAM): 8 GigaByte , Double Data Rate 3(DDR3) Hard Disk Drive (HDD) : 500 GigaByte (GB) Monitor: 19" Light Emitting Diode (LED) Key Board & Mouse: Universal Serial Bus (USB) optical Ports: 3 Universal Serial Bus (USB) ports Latest antivirus software and latest licensed windows Operating System software **Accessory :-** Branded PC Printer Fuse Wire - 10,000 Numbers O-ring Combustion Crucible -20 Nos with each set Tool Kit for the Instrument - 01Set per instrument. Bomb charging station per each set Bomb wiping cloth per each set Dust Cover-01 Number per each set Instruction Manual Warranty Card

CO2 Incubator (AGN-CI-150)

[Read More](#)

SKU:

Price:

Stock: instock

Categories: [Uncategorized](#)



a small capacity and volume to a large scale capacity cabinet. All the CO₂ incubators are built with the patented Water Jacket and Air Jacket systems, which minimizes the risk of condensation at the present and in the future. **Technical Specification :-** External casing : Stainless Steel Programs : 80 programs Internal volume : 150 Litres. Temp uniformity : < +/- 0.3 Deg C CO₂ range : 0 % to 20 %. No. of shelves : 2 Nos Display : TFT Color display Power : 230V, 50/60 Hz Supply. Setting accuracy : 0.1 Deg C Material of shelves : Stainless Steel Temperature range : Ambient + 5 Deg C to 50 Deg C. Temp variation : 37 Deg C < +/- 0.1 Deg C Rear housing material : Zinc plated stainless steel. Interior chamber material : Stainless Steel (ASTM 304). Sensor : IR type & 2 independent PT 100 sensors **Features :-** - Fitted with a small fan for circulating the Co₂. - Adjustable over temperature protection controller class 3.3 - Internal data logger capable of storing the test data - Facility to be recalibrated without connecting to an external PC - Facility to display the temperature in either °C or °F as and when required. - Equipped with standard factory calibration certificate at 37 Deg C, 5% co₂. - Sterilise the chamber at 180 Deg C for 1 hours without removing any sensors. - Facility to accommodate 8 Nos shelves additional grids/shelves. - Heating elements located on 6 sides to ensure temp homogeneity - Mechanical temperature limiter to protect the Incubator from overheating - Ethernet Interface as well as USB interface and necessary software for programming **ACCESSORIES :** - Plug & Cord - Warranty Card - Instruction Manual

[READ MORE](#)

SKU:

Price:

Stock: instock

Categories: [Uncategorized](#)



Product Description

Description : AGN BOD Incubators are especially useful for determining levels of organic matter and nitrogen in waste water samples. These incubators are also called low temperature incubators. The BOD incubator provides the required temperature for the growth of microorganisms. In microbiology laboratories, it is broadly used for cell culture and fungal growth, BOD test, fermentation, crop and physiology, and various pharmaceutical tests etc. Trouble Monitor for Self-Diagnostic Function & provided with Key Lock Switch **Technical**

Specification : Function : Programmable 3-step operational function Controller : Microprocessor Control with a heater PID and compressor Temperature range : -10°C to 50°C Capacity : 235 Litres Shelves material : P. E coated steel wire, adjustable No. of shelves : 5 Nos. Compressor : Air circulation fan with Hermetic type Compressor Alarm : Audible and Visual Alarms Temperature controllability : ± 0.2 deg. at Heater PID control Temperature uniformity :

operations and Minimum 10 programs memorized *CFC-free Foamed-in-place Rigid Polyurethane Insulator & Hermetic Compressor *Triple-pane Glass Observation Window plus 15W Fluorescent Lamp *Independent Over-Temp. Protection Device isolated from main circuit *Programmed Memory Backup & Automatic Return Buzzer Switch

Cooled Incubator

Features :- * Feed forward function to input the operating conditions of the compressor * 12-step repeat from 1 - 98 times or unlimited programmed operations and Minimum 10 programs memorized * CFC-free Foamed-in-place Rigid Polyurethane Insulator & Hermetic Compressor * Triple-pane Glass Observation Window plus 15W Fluorescent Lamp * Independent Over-Temp. Protection Device isolated from main circuit * Programmed Memory Backup & Automatic Return Buzzer Switch

[Read More](#)

SKU:

Price:

Stock: instock

Categories: [Uncategorized](#)



Product Description

AGN-109 AGN BOD Incubators are especially useful for determining levels of organic matter and nitrogen in waste water samples. These incubators are also called low temperature incubators. The BOD incubator provides the required temperature for the growth of

1 - 98 times or unlimited programmed operations and MINIMUM 10 programs memorized * CFC-free Foamed-in-place Rigid Polyurethane Insulator & Hermetic Compressor * Triple-pane Glass Observation Window plus 15W Fluorescent Lamp * Independent Over-Temp. Protection Device isolated from main circuit * Programmed Memory Backup & Automatic Return Buzzer Switch

Technical Specification Function : Programmable 3-step operational function Controller : Microprocessor Control with a heater PID and compressor Temperature range : -10°C to 50°C Capacity : 235 Litres Shelves material : P. E coated steel wire, adjustable No. of shelves : 5 Nos. Compressor : Air circulation fan with Hermetic type Compressor Alarm : Audible and Visual Alarms Temperature controllability : ± 0.2 deg. at Heater PID control Temperature uniformity : ± 0.5 deg. Exterior finish : Baked acrylic finish on galvanized steel Interior finish : Stainless steel Door : Baked acrylic finish on galvanized steel triple-pane glass

Digital Rotary Evaporator New (AGN-RE-100)

[Read More](#)

SKU:

Price:

Stock: instock

Categories: [Uncategorized](#)



allows for optimal control of all distillation processes • Automatic motor lift releases the evaporating flask to a safe position in case of power failure • 5L heating bath with wide temperature range from room temperature to 180°C Water/oil heating mode can be changed only through a switch • Overheating protection temperature at 220°C • Boil-dry protection, automatically power off if heating without water/oil in the heating bath • Speed range from 20 to 280rpm, and interval operation in clockwise and anticlockwise directions for drying process • Condenser (cooling surface 1700cm²) with excellent cooling effect • Ejection mechanism ensures easy removal of evaporating flask • Double spring sealing ring made of PTFE provides an excellent sealing performance • Optional glassware with explosion proof film available

Specification : Evaporating Flask Volume : 50-5000mL(Optional Thickened glass axis compatible with 5L evaporating flask) Motor Type : Brushless DC motor Speed Range : 20-280rpm Display : LCD(speed, temperature, time) Direction of Rotation : Clockwise and counterclockwise Heating Temperature Range : Room temp. to 220°C Control Accuracy : water: ±1°C oil: ±3°C Evaporation capacity : Max.1.56L/h(H₂O) Heating Power : 1500W Lift stroke : Motorized 150mm Timer : Yes Time Setting Range : 1-999min Dimension[D×W×H] : 465×457×583mm Weight : 15kg Permissible Ambient Temperature : 5-40°C Permissible Relative Humidity : 80%RH Protection Class : IP20 USB Interface : Yes Voltage/Frequency : 200-240V, 50/60Hz Power : 1500W

Optional Add-ons (Seals and other Accessories) : vacuum seal PTFE+Viton Evaporation bottle spring Evaporation flask clip(red) NS29/42 Evaporation flask clip(green) NS24/40 Rotary Evaporator transparent safety shield Flask holder(50mL-1000mL) Flask holder(1L-20L)

[READ MORE](#)

SKU:

Price:

Stock: instock

Categories: [Uncategorized](#)



Product Description

Technical Details :- Carrying Trolley : Made of Mild Steel Size : 15x15 cm wheels : 6-inch diameter Tank : Stainless Steel Tank Capacity : 12 Ltr Tank Material : Made of Stainless Steel Filler Neck : Filler neck at the top of tank to top up and fill oil to tank Drain Plug : Drain plug at the bottom of the tank to empty Dip Stick : Stainless steel dipstick is used to check the oil level of the tank. Air Pressure Nozzle : Air pressure nozzles fitted on the top of the steel tank Air pressure : up to 60 PSI Relief Valve : Relief valve fitted on the top of the steel tank to relieve the air pressure automatically Pressure Gauge : Pressure gauge of 63 mm diameter Output Connection : Output connection from the topside of the tank Hydraulic Filter : Hydraulic filter of 03 microns Hand Pump : Hand pump to pressurise the storage tank up to 60 PSI **Features :-** * Cylindrical shape with 30 cm diameter and 45 cm length approximately. * The cap provided air tight with rubber seal. * The range of 100 PSI fitted at the top of the tank to monitor tank pressure. * Flame resistant with stainless steel braided length up to 10 metre **SPARES INCLUDING :-** * Power cable and Plug * Instruction Manual * Warranty Card



[READ MORE](#)

SKU:

Price:

Stock: instock

Categories: [Uncategorized](#)

Product Description

Features : * Vacuum release ports to release negative pressure after frequent door openings * Provided with Inverter compressors and hydrocarbon refrigerants * 80mm insulation material (VIP) to reduce the frosting on inner doors * Provided with castors for mobility and leveling feet for stability * Two independent, insulated, and removable Achilles board inner doors. * Outer door lock with provision to add an RFID access lock system. * Latch-based Inner doors, not with magnetic closing * Self-diagnosis function to continuously monitor & notify the abnormalities before issues occur. * Protection from accidental setting of control panel * Audible & visual alarm for Compressor temp abnormality, Hi/Lo Temperature, door open, filter clog check, power failure, remote alarm, fan lock, sensor abnormality & part replacement notification * Provided with option to add Liquid Co2 Backup system

Technical Details:- Type : Upright ultra low
Capacity : 700 Liters External Dimensions : 1050 x 900 x 2000 mm(W x D x H) Controller : Microprocessor based Controller Temperature range : -40°C to -86°C. Temperature sensor :

Audible & Visual alarms Access port : 3 access ports NOISE level : ≤ 52 db Certification : BIS/FDA (US) /CE(Europe) & ISO 9001 & 14001 certified Power requirement : 220-240 V; 50/60 Hz Rack material : Stainless steel racks **Accessories :-** - Servo stabilizer - Instruction Manual - Warranty Card

Inverted Fluorescence Microscope (AGN-IFM-040)

[Read More](#)

SKU:

Price:

Stock: instock

Categories: [Uncategorized](#)



Product Description

Specification :-

Nosepiece : 4 position B DIC

Illumination Transmitted : LED 10W

Eyepieces : Encoded 4 position Nosepiece and 10x with FOV 20 mm or FOV 23 and diopter adjustment eyepieces facility on both eyes for brightfield, darkfield, phase contrast and support DIC as well.

Stage : Mechanical XY Stage with specimen holders for Multi-well plate's/Petri dishes/Slides/culture flasks.

Objectives : Suitable for Bright-field /Phase Contrast & Fluorescence imaging.

Magnification : 10x/0.25 PH1 FWD 3-4 mm ; 20x/0.30 PH1 FWD 3.5-4.5mm & 40x/0.40-5.0 FWD 2.0-2.2 mm .

Fluorescence : Filter UV-For DAPI, Hoechst, Alexa Fluor 350. Filter Blue- for Rhodamine123,

Fluorescence & intensity measurement. Image enhancement through brightness, contrast, smooth/sharpen, background subtraction, shading correction, white balance.

PC Configuration : Core i5 Processor '3th Gen: RAM 16 GB minimum; 2 TB HDD; 2GB Nvidia Graphic

Card ; minimum Display resolution 1920x1024 or larger. 32-bit; Drive DVD-ROM drive; TFT LED Screen 23 inch Monitor; Multimedia Kit.

OS : Windows 10.

High resolution, pixel size 2.0µm X 2.0µm or 13 mm diagonal .

Low Suction Vacuum Pump for Oxygen Analyzer (AGN-SVP-230)

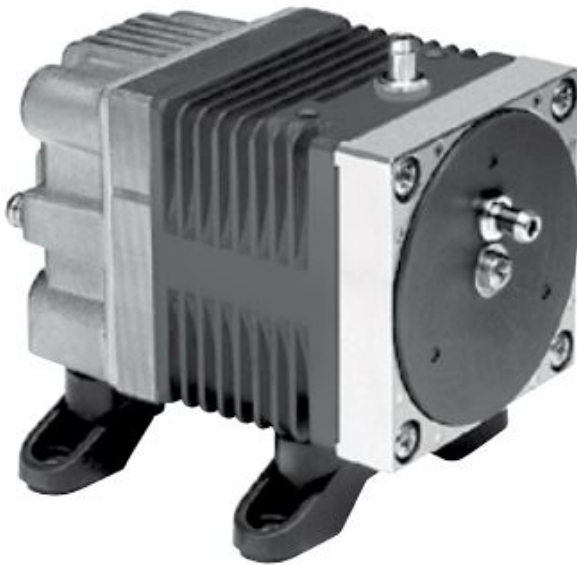
[Read More](#)

SKU:

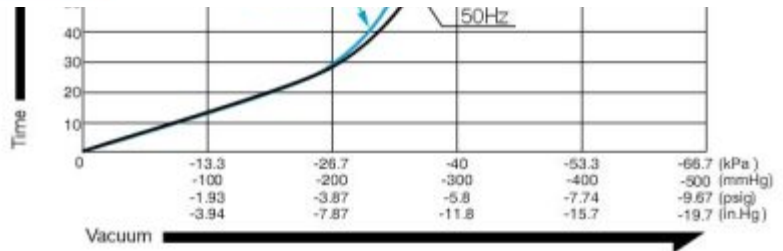
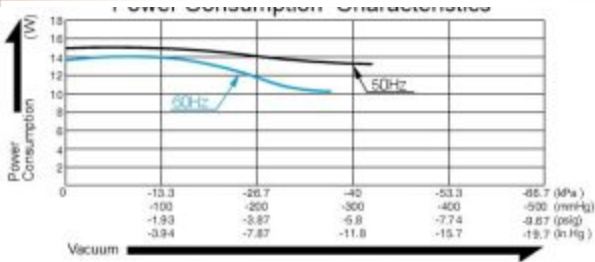
Price:

Stock: instock

Categories: [Uncategorized](#)



Product Description



Specification

Attainable Vacuum	-33.3 kPa (-250 mmHg) -333 mbar -9.84 in. Hg	
Free Air Displacement	7 L/min 0.247 cfm	
Rated Voltage	115 V AC	230 V AC
	14 W	15 W
Rated Frequency	60 Hz	50 Hz
Rated Performance (MTTF)	10,000 hours	
Inlet	6 mm O.D. hose barb	
Outlet	6 mm O.D. hose barb	
Duty Cycle	Continuous	
Coil Insulation Class	Class B for UL	
Mounting Dimensions	48 (L) x 62 (W) mm	
	1-57/64" (L) x 2-7/16" (W)	
Weight	0.7 kg	
	1.54 Lbs	
	200 mm 7-7/8"	

Application Examples

Dripping Machine

Paper Card Dispenser

